

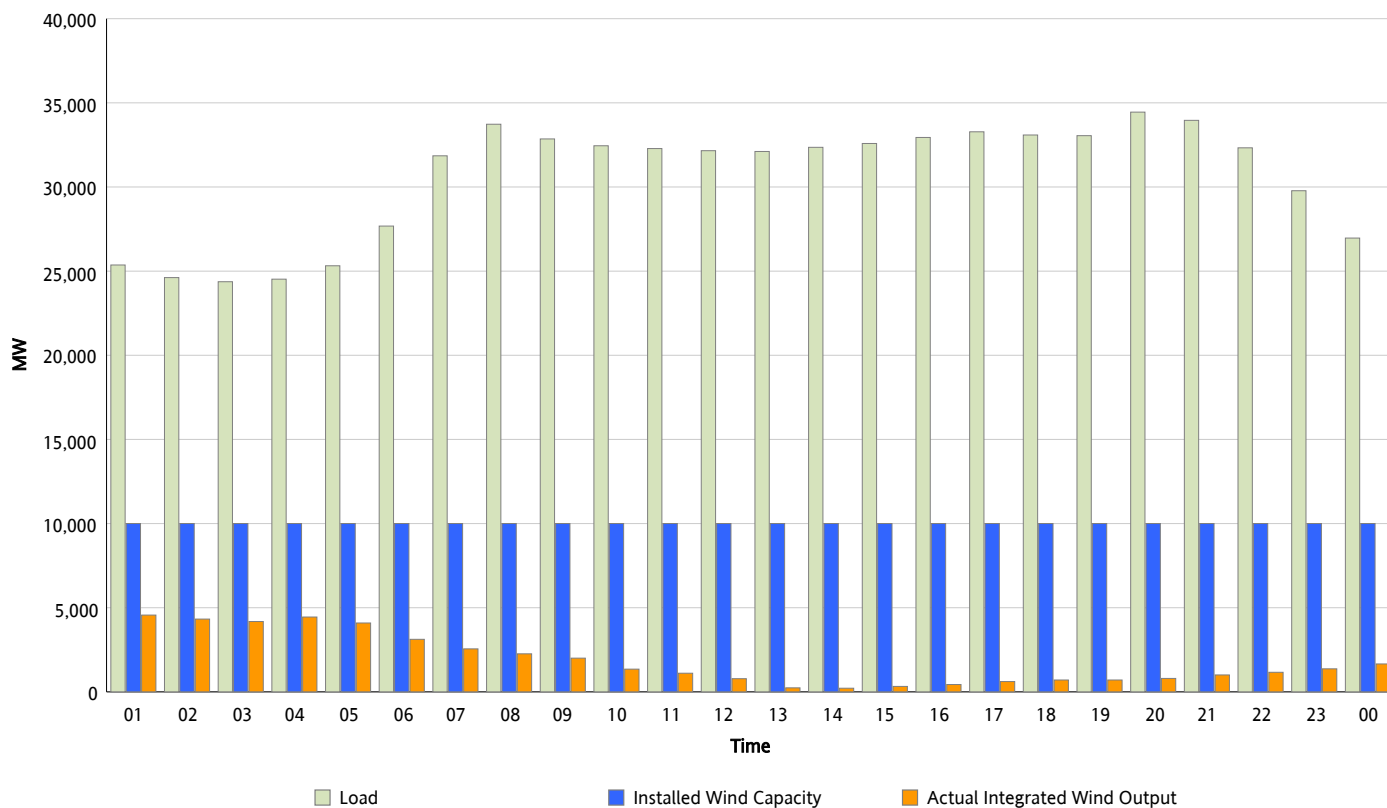


## ERCOT Grid Operations

### Wind Integration Report : 10/30/2012

Peak Load	34,448 MW
Load Peak Hour (HE)	20
Wind Over Peak	799 MW
Wind Record 06/19/12	8,368 MW
Max Wind Value*	4,755 MW
Wind Peak Time	00:00
Wind Integration %	18.37 %

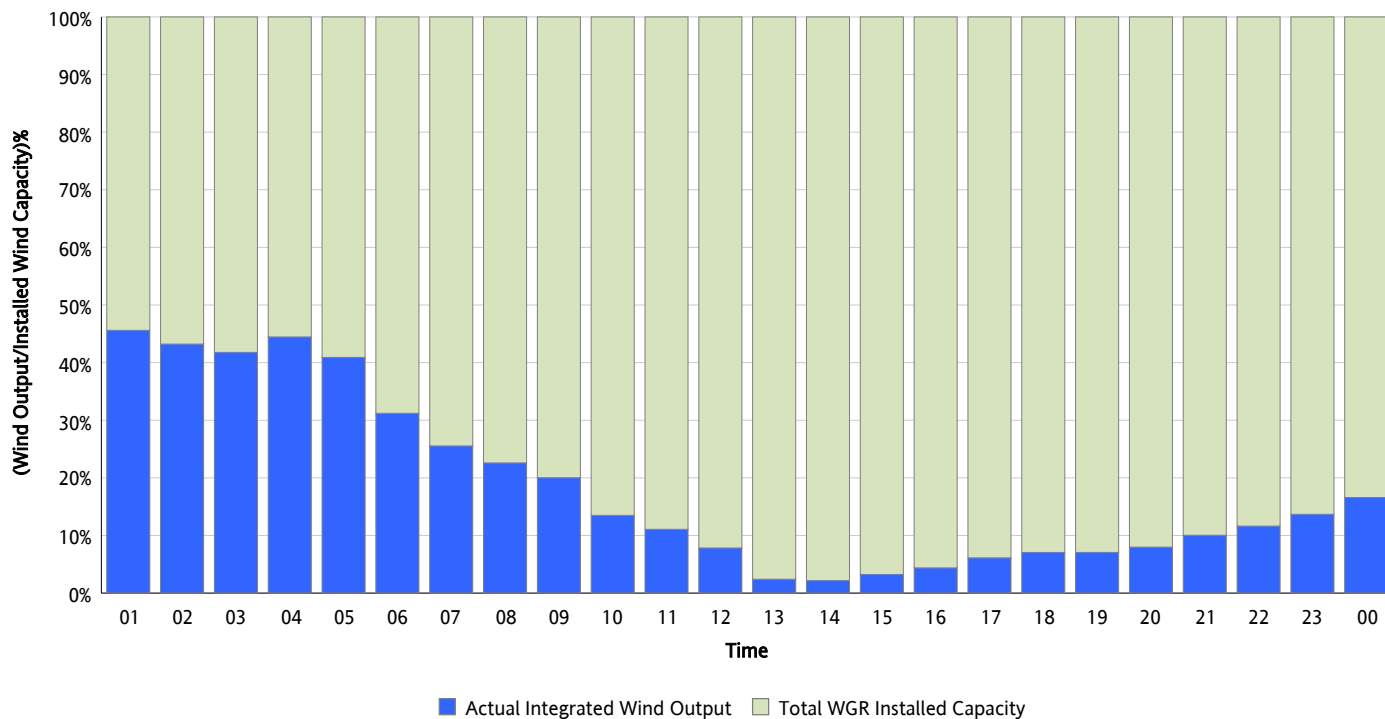
Hourly Average Actual Load vs. Actual Wind Output  
10/30/2012



\* Wind Record and Wind Max represent instantaneous values and the rest of the values are integrated over the hour

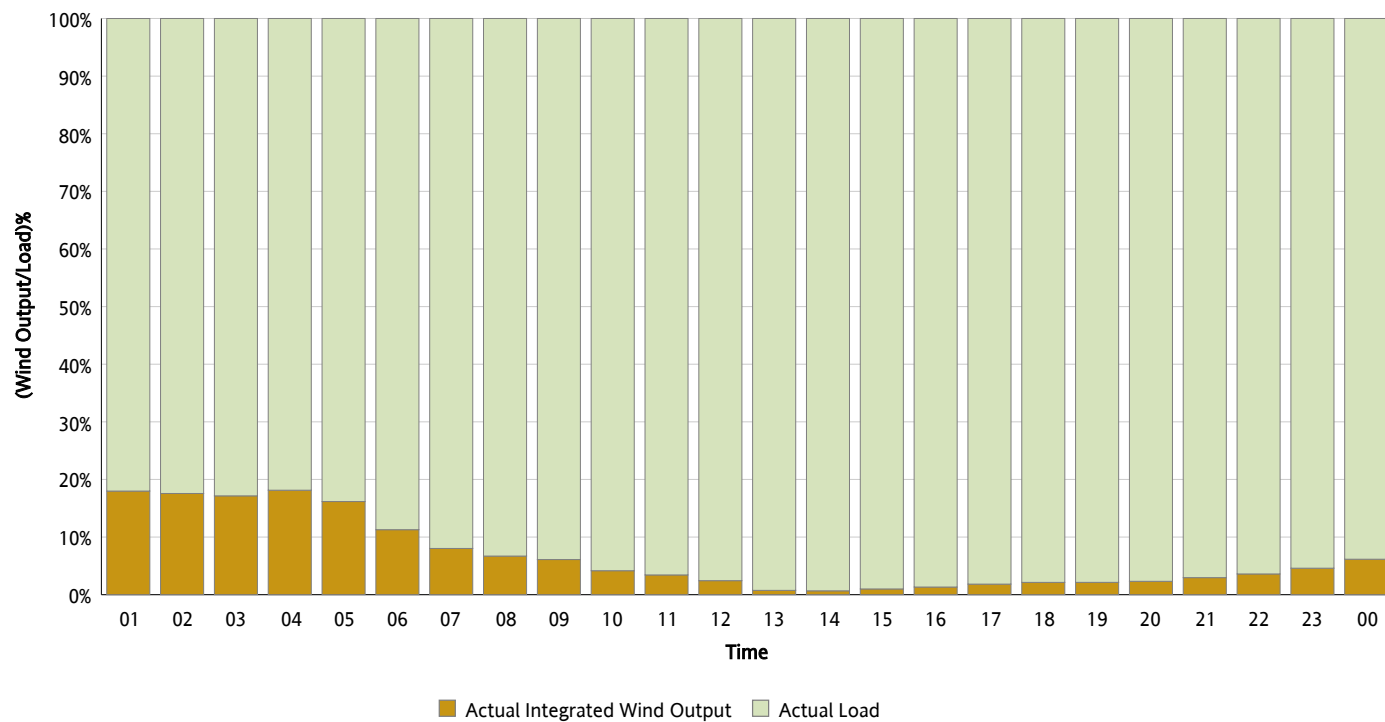
## Actual Wind Output as a Percentage of the Total Installed Wind Capacity

10/30/2012



## Actual Wind Output as a Percentage of the ERCOT Load

10/30/2012



## ERCOT Load vs. Actual Wind Output

10/23/2012 - 10/30/2012

